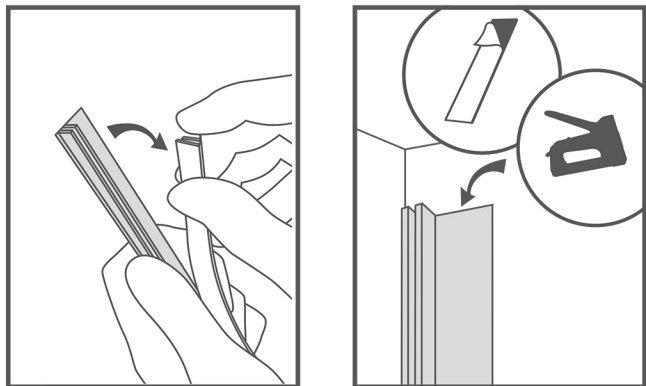


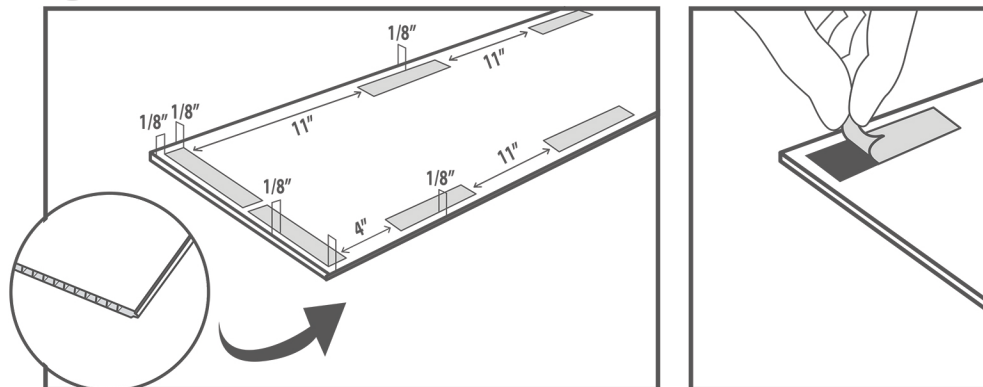
Installation instructions

1



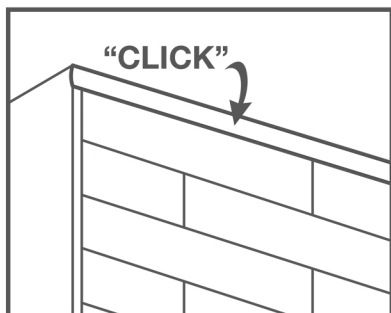
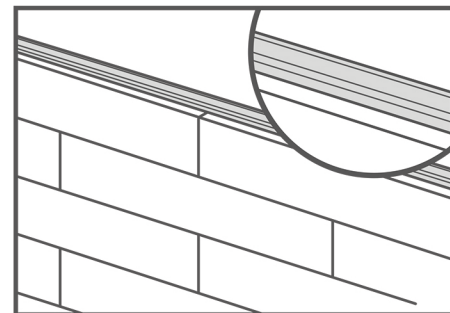
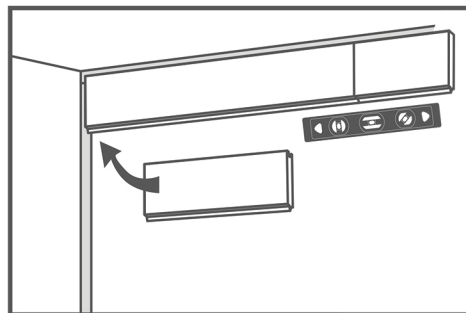
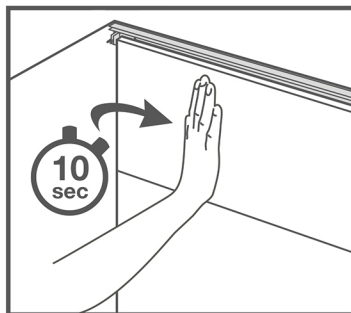
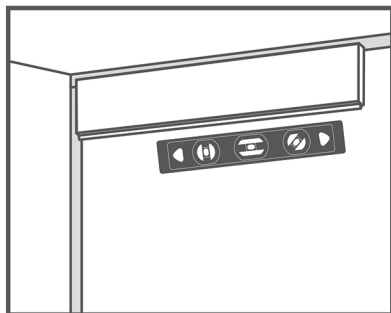
Unclip and place the back of the finishing trim against the wall. (trim not included in the box)

2



- Place the double sided tape strips on the panels.
- The apply a small amount silicon to back of the panel for a secure fix avoiding getting it too close to the edge.

3



Peel & Stick and install on the wall.

Finish by clipping the front of the trim.